



# **ADOPT-A-FAMILY**

OF THE PALM BEACHES

**2025 ANNUAL REPORT**

# INSIDE

<b>Letter From Our CEO and Board Chair</b>	<b>3</b>
<b>Adopt-A-Family Programs</b>	<b>4</b>
Housing Stability	
Homeless Services & Shelter	
Eviction Prevention	
Youth Education	
Wraparound Services	
<b>Gen2 Education Partnership</b>	<b>6</b>
<b>Agency Impact &amp; Outcomes</b>	<b>7</b>
<b>Events &amp; Volunteering</b>	<b>8</b>
<b>Stories From Our Staff</b>	<b>10</b>
<b>Impact the Palm Beaches Award</b>	<b>12</b>
<b>Grant Partners</b>	<b>12</b>
<b>Corporate Partner Spotlight: Carrier</b>	<b>13</b>
<b>40th Annual Tree Lighting Celebration</b>	<b>14</b>
<b>12th Annual Better Ball Invitational</b>	<b>15</b>
<b>The Wiley Reynolds Society</b>	<b>16</b>
<b>Annual Financials: Revenue and Expenditures</b>	<b>18</b>
<b>Mission and Vision Statements</b>	<b>20</b>

## 2024–2025 BOARD OF DIRECTORS

### Executive Committee:

John Elder, Chair  
Elizabeth A. Morales, First Vice Chair  
Nancy J. Kyle, Second Vice Chair  
Heather B. Ferguson, Secretary  
Jonathan Bain, Treasurer  
Kirstin Turner, Immediate Past Chair  
Penny Heller, Member-at-Large  
Lynda M. Murphy, Esq., Member-at-Large

### Members:

Sean P. Bresnan  
John C. Castronuovo  
Stephanie Gitlin  
Takelia Hay  
John P. Marasco  
Tequisha Y. Myles, Esq.  
Bill Peterson  
Derek A. Porter  
Jeffrey W. Preston  
Garth E. Rosenkrance  
Chris Oberlink,  
Lifetime Emeritus Member





**Matthew Constantine**



**John Elder**

## LETTER FROM OUR CEO AND BOARD CHAIR

The 2024-2025 fiscal year reminded all of us at Adopt-A-Family that our work is truly a collaborative effort. It was an exciting period marked by expanded educational programming, record-setting special events, new branding, and the continued ability to offer housing and hope to local families. Every accomplishment took the form of the collective – we/our/us. Each achievement was the result of the shared commitment of donors, volunteers, partner agencies, board members, staff, and most importantly, the clients we serve.

We responded to the growing number of Palm Beach County families in need of housing and shelter – an effort critical to the health of our community as rental rates remained out of reach and requests for homeless assistance climbed nearly 15%. In total, we assisted 1,292 families, which included 2,680 children, through housing, homeless prevention, and emergency shelter services.

Our education efforts continued to expand and improve. Building on the achievements of Project Grow and the Youth Success Program for middle school and high school students, a generous family equipped us to address a longstanding community need: educational counseling for every child living in agency housing. The new Gen2 Education Partnership is the culmination of a great deal of planning and an unwavering belief in our kids’ potential. Today, our campus is buzzing with academic activity: tutoring, workshops, parent meetings, and information sessions. By focusing on advancement, attendance, and school readiness, we are strengthening educational outcomes across the board. Every resident family now has access to enhanced scholastic opportunities, broadening our service delivery to a two-generation approach.

We also introduced a new logo and redesigned website. As an agency that values its history, the cooperative two-year process was not taken lightly. Our refreshed visual identity reflects who we are, the impact we are making, and our core belief that every family needs a stable place to call home. Although our look has changed, our work, mission, vision, and values remain as strong as ever. Our revamped branding not only modernized our appearance but brought a new level of energy to our team.

These accomplishments were all made possible by our dedicated staff, board, and community of supporters. Our special events – including a very special 40th anniversary Tree Lighting – broke records, foundations increased their strategic investment, corporations demonstrated the power of giving locally, government partners equipped us to address family homelessness, and board members led with remarkable passion and commitment. This extraordinary collective effort propels our mission and ensures we will continue strengthening families in our community for generations to come.



**Matthew Constantine, Chief Executive Officer**

**John Elder, Board Chair**



Homeless Services & Shelter



Eviction Prevention



Housing Stability



Wraparound Services



Youth Education

# Adopt-A-Family Programs

Making sure families have a safe, stable place to live is the first step – but by no means the only step – in our agency’s mission to help both generations of clients thrive.

## PROJECT SAFE

With 32 units, Project SAFE is Palm Beach County’s largest permanent supportive housing program for families experiencing homelessness. Project SAFE families face complex barriers that impact their ability to maintain housing. Intensive case management is paired with robust wraparound services to help clients regain stability and move toward self-sufficiency.

## WILEY REYNOLDS GARDENS APARTMENTS

Built by Adopt-A-Family in 2008, Wiley Reynolds Gardens Apartments is home to nine working families who have experienced homelessness. The two- and three-bedroom townhomes are affordable for families who would be unable to pay market rent, and case management helps families pursue stability.

## JULIAN PLACE

Julian Place is an innovative community designed to strengthen children’s educational outcomes through the provision of stable housing for their family. The program’s 14 townhomes serve families referred by nearby Highland Elementary School, which has one of the county’s highest rates of student homelessness.

## NEIGHBORHOOD STABILIZATION PROGRAM 2

Neighborhood Stabilization Program 2 offers 24 genuinely affordable rentals that are accompanied by case management services. Scattered throughout Lake Worth, these multi-unit properties are reserved for working families who have been priced out of the local market.

## SERVICE ENRICHED HOUSING

Service Enriched Housing comprises 31 apartments for employed, income-qualified families committed to the pursuit of financial growth, credit repair, and homeownership. The rent model includes a savings component, enabling residents to build a reserve fund simply by making their monthly housing payment.





## SENATOR PHILIP D. LEWIS HOMELESS RESOURCE CENTER, FAMILY DIVISION

The Homeless Resource Center (HRC) is the central access point for Palm Beach County families experiencing unsheltered homelessness. Agency staff examine each family's unique circumstances and connect them to appropriate housing solutions: diversion, emergency shelter, rapid re-housing rental assistance, or permanent supportive housing. The HRC offers on-site laundry, showers, computers, and a school uniform closet.

## PROGRAM REACH EMERGENCY SHELTER

Program REACH provides 19 furnished apartments for households who have been living in places unfit for human habitation. Families stay for up to 90 days, receiving intensive case management and support services that help them secure permanent housing. On-site resources include mental health therapy, budget counseling, tutoring, a food pantry, and computer access.

## HOUSING STABILIZATION PROGRAM

An agency program for 40 years, this eviction prevention initiative pays past-due rent for families who have fallen behind due to an illness, injury, job loss, or other crisis outside their control. Three months of case management, budget counseling, and ancillary referrals help households as they get back on their feet.



## PROJECT GROW

The Project Grow afterschool/summer program is a safe haven for children who have grown up with housing insecurity. Project Grow addresses the traumas and academic delays associated with childhood homelessness, serving elementary school students from agency housing and the surrounding high-poverty neighborhood. In this enriching environment, students build the confidence and skills they need to succeed in school and in life.

## YOUTH SUCCESS PROGRAM

Launched in 2021 to address the needs of resident teenagers, the Youth Success Program empowers middle- and high school students through tutoring, mentorship, enrichment, and a positive peer community. Focused on academic achievement and future planning, the program provides homework assistance, social skill development, and team-building experiences. Incentive outings reward students who meet academic and attendance benchmarks, reinforcing progress, accountability, and motivation.





Gen2 Education Coordinator Michelle Pinto (right) works with a ninth-grader and her family.

# Our New Gen2 Education Partnership

Friends of Adopt-A-Family are well-acquainted with how comprehensively Project Grow and the Youth Success Program support their students. But what about the other 100 resident children who aren't enrolled in those programs? We wondered: What might *they* need?

This year, thanks to a generous two-year donor commitment, Adopt-A-Family launched the Gen2 Education Partnership to further cultivate an education-centric, hope-filled environment on our Lake Worth Campus.

The full-time Gen2 Education Coordinator assesses each child's academic standing and remains the primary advocate for students not enrolled in our other youth programs. Through collaboration with parents, case managers, and the school district, Adopt-A-Family is working to provide access to the best possible educational experience for resident children of all ages.

## Campus-Wide Gen2 Services Include:

- Ensuring preschoolers are enrolled in academically strong daycare programs that focus on school readiness.
- Facilitating and paying for neuropsychological testing for gifted/special needs designations.
- Monitoring student performance, attendance, and conduct, providing mentoring and guidance.
- Aiding in the establishment of Individualized Education Plans.
- Helping parents navigate the school system and advocate for their children.
- Providing resources to help families apply for public school Choice programs, private/charter schools, and scholarships.
- Guiding teens and their parents through college, trade school, and financial aid applications.





The provision of **Wraparound Services** is of such importance to our clients' success that it is included in Adopt-A-Family's mission statement.

### MENTAL HEALTH PROGRAM

Stable mental health is crucial for parents to maintain employment and housing, and for children to thrive in school. A Licensed Clinical Social Worker provides free, on-site therapy within walking distance of clients' homes, removing barriers so families can access the care they need to heal, stabilize, and pursue their goals.

### JOB COACH PROGRAM

The Job Coach Program empowers clients to secure higher-paying jobs with benefits and growth opportunities. Through personalized guidance on resumes, applications, interviews, and education or vocational training, clients have returned to college, earned licenses, changed careers, and even launched businesses – boosting their earning potential, professional satisfaction, and self-confidence.

### NEXT STEP GRANT

The Next Step Grant program assists clients who have identified a path for vocational success but lack the finances to pursue it. Donor-funded and agency-administered, the program provides mini-grants for tuition, books, uniforms, registration fees, exams, and even transportation. Thanks to this initiative, clients have earned certifications in healthcare, bookkeeping, property management, and many other fields.

# Agency Impact & Outcomes

July 1, 2024 – June 30, 2025

### Clients Served

During the 2025 fiscal year, Adopt-A-Family served

**1,292** Families      **4,379** Individuals  
**2,680** Children      **1,699** Adults

### Charity Navigator

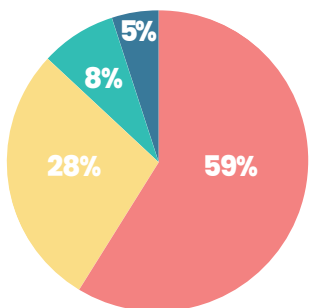
Since 2007, Adopt-A-Family has maintained a 4-Star rating from Charity Navigator, the highest possible ranking from the nation's largest nonprofit evaluator.

#### Our scores:

Accountability & Finance: **100%**  
Impact & Measurement: **99%**  
Culture & Community: **100%**  
Leadership & Adaptability: **100%**



### Housing Solutions



75% of the 200 families placed in emergency shelter (at Program REACH or in a motel) successfully exited to stable housing in under 90 days. Here is where they went:

- Rental with subsidy
- Rental with no subsidy
- Nonprofit supportive housing
- Home of friend/family

### Eviction Prevention

The Housing Stabilization Program prevents homelessness through rent assistance and case management. The vast majority of clients remain stably housed after program intervention:

#### 6 months

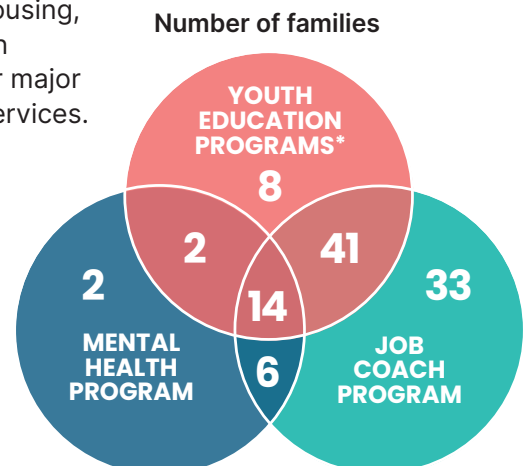


#### 12 months



### Support Services Engagement

Of the 123 families who lived in our Lake Worth housing, 86% engaged with at least one of our major on-site support services.



\* Gen2 launched April 2025

# Events & Volunteering

Special events bring moments of joy to parents and children facing hardship, helping families create positive memories together. These events are made possible by dedicated, generous individuals, civic groups, churches, businesses, and schools.

## Event Spotlights

**Fall Festival:** This annual autumn celebration at the Program REACH emergency shelter features a magic show, face painting, crafts, and games. The event offers a reprieve from daily stressors and fosters meaningful family connection.

**Gift Giving:** The Family Division of the Homeless Resource Center becomes a holiday shop stocked with toys and gifts donated by community groups and local businesses. Parents select presents for each of their children, and a team of volunteers is on hand to wrap every gift. During the three days of this year's Gift Giving, the event provided presents for 216 children.

**Project Grow Graduation:** In May 2025, Adopt-A-Family hosted its second annual Project Grow Graduation Ceremony. Family and staff celebrated the students' accomplishments and encouraged them to dream big as they prepared for middle school.

**Civic Engagement:** In the run-up to the 2024 general elections, Adopt-A-Family invited nonpartisan community partners to help clients navigate voter registration and understand the legislative process.



## HOW TO VOLUNTEER

Adopt-A-Family could not operate without hundreds of volunteers who are passionate about making a difference in our community. We are so grateful to everyone who gives their time and talent to support Adopt-A-Family's work and mission.

### Would you like to help?

Learn more about service opportunities and access our volunteer portal by scanning this QR code or by visiting [aafpbc.org/volunteer](https://aafpbc.org/volunteer).



## Other Events from July 2024 to June 2025:

- Back to School Bash (Program REACH)
- Fresh Food Distributions (Lake Worth Campus)
- Trunk or Treat (Lake Worth Campus)
- Community Painting Projects (Lake Worth Campus)
- Jewelry Shop for Mother's Day Gifts (Project Grow)
- Budgeting Courses (Lake Worth Campus)
- Field Days (Project Grow)
- Family Movie Nights (Lake Worth Campus)
- Choice School Information Session (Lake Worth Campus)
- Yoga Classes (Lake Worth Campus)
- Thanksgiving Food Distribution (Lake Worth Campus)
- Santa Shoppe (held off-site)
- Holiday Adopter Program (Lake Worth Campus)
- College Tour (Florida International University)
- Egg Hunt (Lake Worth Campus)
- Family Wellness Day (Lake Worth Campus)
- Vision Board Workshops (Lake Worth Campus)
- STEM Night (Project Grow)
- PNC Mobile Banking (Lake Worth Campus)
- Evelyn & Arthur Pop-Up Shop (Lake Worth Campus)
- Summer Kickoff Event (Lake Worth Campus)
- Group Birthday Celebrations (Program REACH, Project Grow)

### Lake Worth Campus/Project Grow

1712 Second Avenue North  
Lake Worth, FL

### Homeless Resource Center

1000 45th Street  
West Palm Beach, FL

### Program REACH

1320 Henrietta Drive  
West Palm Beach, FL



At Santa Shoppe, everyone has fun: kids, parents, staff, the many volunteers, and Mr. & Mrs. Claus.



Back-to-school time is filled with excitement and an outpouring of support, from supply and uniform drives to a party for client families.

## Matt Constantine

**Title:** Chief Executive Officer  
**Start Year:** 2002

Early in his career at Adopt-A-Family, Matt Constantine was Tia's case manager, never imagining she would shape how he leads today.

After escaping domestic violence, Tia moved into agency housing with her three children. Fiercely focused on her family's future, she enrolled her kids in Project Grow, worked while pursuing a career with the postal service, built financial stability, and ultimately purchased a home.

As he watched Tia transform opportunity into lasting success, Matt's vision expanded. Today, as CEO, he ensures every family has tools – access to job coaching, mental health services, education, and enrichment – that equip them to use the stability of housing as a springboard to truly thrive.



## Kelly Rigell

**Title:** Director of Grants & Communications  
**Start Year:** 2006

There is tenacity. And somewhere beyond tenacity there is Ava, Kelly Rigell's very first client.

Born in Thailand, Ava moved to the United States for a better life, one she ultimately built through her special blend of determination, humor, and grace. Ava survived domestic violence and homelessness. Today, she owns a home.

"Ava had zero support systems, zero family, no connections," Kelly says. "She fought so hard to make things right, to give her daughters what she knew they deserved."

Watching Ava, Kelly internalized a relentlessness that grew her as a social worker. "You have to navigate hard systems," she says. "You can't give up. Ava showed me the triumph of the human spirit."



# Stories

## From Our Staff

Longtime Adopt-A-Family team members share lessons their clients have taught them.

## Gloriene Claudio-King

**Title:** Director of Coordinated Entry & Emergency Shelter  
**Start Year:** 2012

Gloriene Claudio-King answers some tough calls at the Homeless Resource Center. But hearing from Anna always lifts her spirits.

At 60, Anna took in two teenaged grandchildren and, as a result, was forced out of her senior living community. She and her grandchildren ended up at Program REACH, where Anna was known for her big smile and for keeping the cleanest unit in shelter history. With agency help, the new family unit found a home. Anna still calls often. The joy in her voice reminds Gloriene that even in the hardest moments, hope lights the way forward – for our clients and for those who serve them.



## Rae Harris

**Title:** Housing Compliance Manager  
**Start Year:** 2010

Amy knew exactly what she wanted in her dream home, down to the white picket fence, and she was determined to turn that dream into reality. A mother of two, she worked as a medical assistant and excelled at budgeting.

As the Program Manager at Service Enriched Housing, Rae Harris witnessed the power of Amy's resolve. But Amy was also a guarded person whose trust needed to be earned. "When she sat in my office, I just listened," Rae says. "It helped me learn that as a social worker, I am a stranger entering someone else's journey."

With Rae's help, Amy did buy that dream home. It checked every box – including the white picket fence.



## Daron Morse

**Title:** Director of Youth Educational Programs  
**Start Year:** 2006

Daron Morse and James started in Project Grow at the same time. She was a Literacy AmeriCorps volunteer and he was in kindergarten. The next year, Daron joined the Project Grow staff and watched as James grew older, more confident – and more boisterous.

In third grade, James faced a choice. He could settle for being the class clown or he could refocus on his education.

Daron met with James and his mom, facilitating meaningful conversations that led James to dedicate himself to his studies. Without that support, Daron knows that things could have gone much differently for him.

"When kids look back on their time at Project Grow, they'll see how it shaped their choices," Daron says. "I'm really proud of that."



## Jessica Pagán

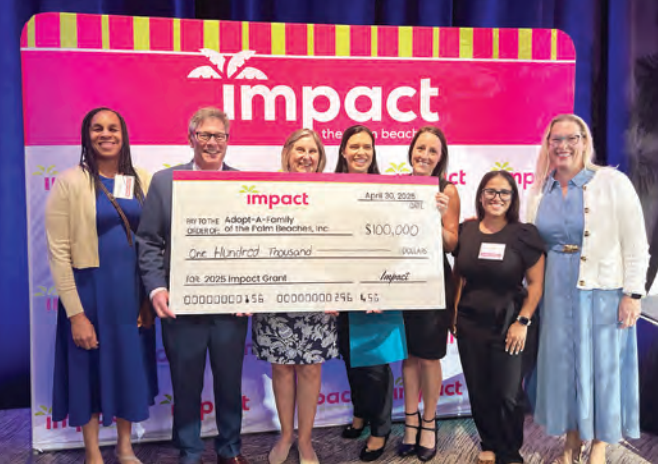
**Title:** Director of Housing  
**Start Year:** 2014

A childhood spent in foster homes taught Zuri that there was no one she could trust. After aging out, she dropped out of school, experienced homelessness, lost a baby, and had a son with a disability.

When Jessica Pagán met Zuri, the young mom was guarded and carrying immense trauma. But at Project SAFE, Zuri found something she had never known: a true support system. Through case management, therapy, and job coaching, she began to trust our staff and herself. She completed a culinary program and pursued her GED.

For Jessica, Zuri's journey demonstrated the power of a support network and deepened her understanding of its importance for the next generation. Today, Zuri proudly shares her milestones with our staff – no longer alone, surrounded by a team dedicated to her family's future.





# \$100,000 Impact Grant: A Big Win for the Kids

For the first time in agency history, Adopt-A-Family received a prestigious \$100,000 grant from Impact the Palm Beaches, a collective of local women who share a commitment to philanthropy and social change.

After a multi-step grant application process, hundreds of Impact members gathered on April 30, 2025, at the 10th Annual Awards Celebration to hear presentations from the six finalist organizations. The members selected three top winners, including Adopt-A-Family, in a live, real-time vote.

Supplemented by generous donations from committed agency friends, the Impact grant was earmarked for a much-needed playground renovation at Project Grow. Designed with student input, the renovated playground (left) will include a spinning element, a climbing frame, and an activity track. As a replacement for the beloved 23-year-old structure, the new playscape will get decades of use and enjoyment.



## Grant Partners

The generosity of our foundation partners is a driving force at Adopt-A-Family. Their support allows us to sustain core programs, respond to urgent community needs, and pilot innovative solutions. Beyond their financial investment, foundation partners enhance our impact through thoughtful guidance, insight, and accountability. We are deeply grateful to our foundation supporters – including seven new partners – who stood alongside us during the 2025 fiscal year.

The Addison Reserve Foundation\*  
 BallenIsles Charities Foundation  
 Bank of America Charitable Foundation  
 BankUnited  
 The Batchelor Foundation  
 Boca Rio Foundation  
 The Alvah H. & Wylene P. Chapman Foundation\*  
 Children’s Healthcare Charity  
 Community Foundation for Palm Beach and Martin Counties  
 Day 1 Families Fund  
 The Frederick A. DeLuca Foundation  
 Early Learning Coalition of Palm Beach County  
 First Horizon Foundation  
 The Fledgling Fund  
 The Mary Alice Fortin Foundation

The Frenchman’s Reserve Charitable Foundation\*  
 Gerstner Family Foundation  
 Hearst Foundation\*  
 Homeless Coalition of Palm Beach County  
 Humana Healthy Horizons in Florida  
 Ibis Charities Foundation  
 Impact the Palm Beaches\*  
 International Materials Foundation  
 Kingdom Charitable Trust  
 Lattner Family Foundation  
 Lost Tree Village Charitable Foundation  
 Cathleen McFarlane Foundation  
 Mirasol Foundation  
 The Jim Moran Foundation  
 Palm Beach Community Trust Fund  
 Palm Beach County

Palm Beach Flagler Rotary Foundation  
 PNC Foundation  
 Publix Super Markets Charities  
 Quantum Foundation  
 RBC Foundation – USA  
 Mary Durstine McArtor Reynolds Memorial Giving Fund\*  
 Royal Poinciana Chapel  
 J.M. Rubin Foundation  
 Siemer Institute\*  
 The Smith Brothers Family Foundation  
 The TJX Foundation  
 Town of Palm Beach United Way  
 United Way of Palm Beach County  
 U.S. Department of Housing and Urban Development  
 Whole Foods Market Foundation

\* First-time funder



Guests enjoy cocktail hour at Carrier's *Building Communities – One Family at a Time* fundraiser, held at the company's global headquarters in Palm Beach Gardens.

# Corporate Partner Spotlight: Carrier

A new collaboration with Carrier was a defining highlight of the 2025 fiscal year.

Carrier, global leader in intelligent climate and energy solutions, supports organizations that promote the planet, people, and communities where its employees live and work. When the company relocated to Palm Beach Gardens, its search for trusted nonprofit partners led company leaders to Adopt-A-Family.

Chairman & CEO Dave Gitlin and members of the Carrier team visited the Adopt-A-Family campus to see our work in action. They asked thoughtful questions, connected with staff, and spent time with Project Grow students. Soon after, Carrier mobilized its network in an unprecedented show of support, an effort made possible by the kindness and community spirit of employees throughout the company.

Over a period of just over a year, Carrier hosted a 5K, two supplier golf tournaments, and an inaugural fundraiser for the agency: *Building Communities – One Family at a Time*. More than 200 guests from across the country and around the world attended the event, which included a cocktail reception, silent and live



Carrier employees race to support Adopt-A-Family's mission.



auctions, dinner, client testimonials, and an address from Dave Gitlin. Taken together, these efforts generated an astonishing \$1 million for our work and mission.

Adopt-A-Family's partnership with Carrier is deepened by the personal commitment of Dave and Stephanie Gitlin, who have become valued agency friends and collaborators. As an Adopt-A-Family board member, Stephanie volunteers her professional guidance and legal expertise, bringing a new voice and fresh ideas. We are grateful to everyone associated with the Carrier team for their profound dedication to helping neighbors in need.

# 40th Annual Tree Lighting Celebration

For four decades, Adopt-A-Family's Annual Tree Lighting Celebration has been a hallmark of the holiday season, generating critical funds that sustain agency operations throughout the year.



On December 3, 2024, agency friends gathered in Palm Beach to celebrate the milestone 40th Annual Tree Lighting Celebration, which raised \$1.2 million, a new single-event record.

Guests were welcomed by The King's Academy Choir and enjoyed an expansive silent auction and stunning orchid display. Newer elements included Dine & Dash, an "everyone wins" Wine Pull, and Baskets from the Heart – gifts purchased by attendees to be given to client families.

CEO Matt Constantine reflected on the far-reaching impact of Adopt-A-Family's work, thanking the community whose support makes it possible. Following a moving client testimonial, auctioneer and agency friend Neil Saffer led a live auction and Call from the Heart.

The event's success was made possible by the dedication of the Tree Lighting Committee and the leadership of Chair Nancy J. Kyle. Honorary Chairs Paula Michel, Alice Tarone, and Beth Hennessy led the 10th, 20th, and 30th Tree Lighting Celebrations, respectively. This year's special anniversary Tree Lighting stands as a testament to the enduring generosity of Adopt-A-Family's community of supporters.



Above: CEO Matt Constantine and Chair Nancy J. Kyle.



Left: Honorary Chairs (L-R) Alice Tarone, Paula Michel, and Beth Hennessy.

# 2024 Tree Lighting Committee Members

**Nancy J. Kyle, Chair**

## **Members:**

Patricia Anathan  
Judy Backstrom  
Elizabeth Baldwin  
Judy Coran  
Lori Corrigan  
Kristine Cruikshank  
Cheryl Culp  
Elizabeth DeBrule  
Jen Dudnyk  
Heather Ferguson  
Karen Fischer  
Ileene Fisher  
Julie Gambale  
Carolyn Haggerty  
Ann Hamrock  
Sherry Hay  
Bernadette Haynes  
Penny Heller  
Beth Hennessy  
Carol Jeney  
Nancy Kalaher  
Melissa Koppelman  
Brenda McGarrity  
Mariatta McNulty  
Paula Michel  
Bel Miller  
Jennifer Nawrocki  
Rita Nowak  
Chris Oberlink  
Michelle Otremba  
Debby Parr  
Kathy Peterson  
Jeanette Ristau  
Julie Rudolph  
Susan Spera  
Alice Tarone  
Anita Tauber  
Jennifer Trainor



Winning foursome (L-R) Jeff Preston, Hampton Beebe, John Criddle, and Dave Abers.

## **12th Annual Better Ball Invitational**

In April 2025, Adopt-A-Family returned to The Park West Palm for the second consecutive year for the 12th Annual Better Ball Invitational. On a perfect spring day, 21 foursomes warmed up on the driving range and enjoyed lunch before heading out for a competitive round of 18 holes. The day concluded with an awards ceremony and dinner.

Thanks to the dedication of the Golf Committee – Frank Bresnan, Sean Bresnan, Joe Carron, Tom Frankel, Ned Grace, Joe LaRocca Jr., Gary Pohrer, Jeff Preston, and Will Ryan – the event raised a record-breaking \$272,000.

With year-over-year fundraising growth and a passionate community of golfers and sponsors, the Better Ball Invitational continues to be a powerful driver of support for Adopt-A-Family.

**Tournament Sponsors:** Nancy J. Kyle; The Bresnan Family; NADG; Brooklyn Water Bagel Co. **Lunch Sponsors:** Miles Nadal; David Lambert; The AMG Charitable Foundation; Spina O'Rourke; Louis Copano. **Cocktail Hour Sponsors:** CIBC; Michele and Howard Kessler; Press Ganey. **Golf Ball Sponsors:** Moss; Collins and Arnold; Marsh McLennan Agency. **Forecaddie Sponsors:** CAC Group; Blue Cross Blue Shield; First Horizon Bank; Comvest; MAI Capital Management; Wealth Partners Capital Group; Eastdil Secured. **Golf Cart Sponsors:** Kolter; Wells Fargo; Miskel Backman Law; Alvarez and Marsal; Wick Phillips Attorneys & Counselors; J. Raymond Construction; Stuart & Shelby Development, Inc. **Signage Sponsor:** Risk Strategies. **Closest to the Pin – Men:** The Matthew & Tracy Smith Foundation; TD Bank. **Closest to the Pin – Women:** Regions Bank. **Longest Drive – Men:** Citizens; PNC Real Estate. **Longest Drive – Women:** Streetsense; Dowbuilt. **Hole Sponsors:** Howard L. Friedberg; Michael and Jacki Crosby; The Rendina Family Foundation; The Coniglio Family. **Eagle Sponsor:** Gil Martinez Agency/State Farm.

# The Wiley Reynolds Society

With lifetime contributions exceeding \$100,000, the agency friends and private foundation partners who have been inducted into the Wiley Reynolds Society carry on the tradition of boundless generosity and compassion embodied by its namesake. Every member exemplifies the same long-term, sustaining commitment to Adopt-A-Family's work throughout Palm Beach County.

The agency's first Board Chair, Wiley Richard Reynolds played a pivotal role in helping establish the model upon which the agency was built – identify struggling families and “adopt” them until they are back on their feet. Today, our Wiley Reynolds Gardens Apartments community stands as a brick-and-mortar reminder of this leader's vision.

## Society Giving

Individuals: **\$13,416,525.89**  
Foundations: **\$18,853,934.13**  
Total: **\$32,270,460.02**

Who was this special man? A Yale University graduate, Mr. Reynolds served in the Army Air Corps during World War II. He was President and Chairman of the Board of the First National Bank in Palm

Beach, a director of five other Florida banks, and a gubernatorial appointee to the Florida Development Commission. Mr. Reynolds also served on the boards of Palm Beach Day School, Good Samaritan Hospital, the Society of the Four Arts, and was a vestryman at the Church of Bethesda-by-the-Sea.

Though Mr. Reynolds passed away in 2005, his legacy continues to inspire new generations of philanthropists who have embraced Adopt-A-Family's mission. His name will always be associated with a passion for helping where help is most needed.

## 2025 Wiley Reynolds Society Members

### INDIVIDUAL SOCIETY MEMBERS

Anonymous  
Mr. and Mrs. Doug Briggs  
Mr. and Mrs. John C. Castronuovo  
Mr. and Mrs. Dale R. Clift  
Ms. Elizabeth DeBrule  
Mrs. Martha B. DeBrule  
Mr. and Mrs. Timothy M. Donahue  
Mr. and Mrs. Edward K. Dudnyk  
Mr. and Mrs. Edward J. Edelman  
Ms. Karen S. Fischer  
Mr. and Mrs. Patrick J. Flynn  
Ms. Mari Frankel  
Mr. Thomas Frankel  
Mr. and Mrs. David and Stephanie Gitlin  
Mr. and Mrs. Lewis Hay III  
Mr. and Mrs. Jonathan Haynes  
Ms. Penny Heller  
Mrs. Sara Jo Kobacker\*  
Mr. and Mrs. Stanley Koppelman  
Ms. Nancy J. Kyle and Mr.\* John B. Fraser  
Mr. and Mrs. James E. Larschan Jr.  
Mr. John P. Lipari  
Mr.\* and Mrs. John R. Loomis  
Mr. and Mrs. John P. Marasco  
Mr. Jay R. Marcus  
Mr. and Mrs. Charles E. McGarrity  
Mr. and Mrs. Sam Meshberg  
Mr. and Mrs. George Michel Jr.  
Mr. and Mrs. William B. Oberlink  
Mr. and Mrs. Ronald E. Parr  
Mr. and Mrs. William B. Peterson  
Mr. and Mrs. Garth E. Rosenkrance  
Mr. and Mrs. John F. Scarpa  
Mr. and Mrs.\* Lawrence Silverstein  
Ms. Melissa H. Sullivan  
Mrs. Meredith B. Trim and Mr. James L. Robo  
Mr. Walter Wick and Ms. Lisa Hedley  
\* Deceased

### PRIVATE FOUNDATION MEMBERS

BallenIsles Charities Foundation  
The Batchelor Foundation  
Walter and Adi Blum Foundation  
The W. Dale Brougher Foundation  
Day 1 Families Fund  
Lawrence J. and Florence A. De George Charitable Trust  
The Frederick A. DeLuca Foundation  
The Celia Lipton Farris & Victor W. Farris Foundation  
The Fortin Foundation of Florida  
The Mary Alice Fortin Foundation  
Gerstner Family Foundation  
Hearst Foundation  
The Edward L. Hennessy, Jr. and Ruth S. Hennessy Foundation  
The Kirkwood Fund  
Kresge Foundation  
Lattner Family Foundation  
Lost Tree Village Charitable Foundation  
Cathleen McFarlane Foundation  
The Jim Moran Foundation  
The Price Family Foundation  
The Harold and Kate Reed Family Foundation  
J.M. Rubin Foundation  
The Salah Foundation  
Lawrence A. Sanders Foundation  
The Smith Brothers Family Foundation  
The Edward E. Stone Foundation  
John Ulbrich Charitable Trust

These lists include Wiley Reynolds Society members as of June 30, 2025. In next year's annual report, we look forward to recognizing donors who reach the \$100,000 giving milestone during the 2025-26 fiscal year.



Tequisha Myles (right) and Director of Administration Emily Gorman.

## Crystal Castor Award For Outstanding Volunteer Service

Few people embody the spirit of volunteerism at Adopt-A-Family quite like **Tequisha Myles**, a longstanding board member and dedicated volunteer whose service has touched every part of the organization.

Over the years, Tequisha has consistently offered her time, talent, and leadership, bringing professionalism, wisdom, and care to every role she undertakes. A Supervising Attorney at Legal Aid Society of Palm Beach County, Tequisha has used her legal expertise to strengthen our work in countless ways, while her deep respect for the dignity of others makes her an invaluable member of our community.

Tequisha has volunteered at all of the agency's signature events, including Santa Shoppe, Tree Lighting, Ducky Derby, the Back to School Bash, STEM Night, and Project Grow Graduation. Her kindness and steady presence help make each of these experiences meaningful for clients, staff, and fellow volunteers alike.

Leading by example, Tequisha has made service a family tradition, often volunteering alongside her mother and daughter.

In recognition of her extraordinary dedication, Adopt-A-Family was proud to present Tequisha with the 2025 Crystal Castor Award for Outstanding Volunteer Service.



Penny Heller and Chief Executive Officer Matt Constantine.

## Wiley Reynolds Society Award of Appreciation

For nearly 20 years, **Penny Heller** has exemplified unwavering dedication to Adopt-A-Family's mission and has played a vital role in expanding our reach and impact.

Penny's journey with the agency began in 2010 when she joined the Tree Lighting Committee. Her leadership skills quickly became evident, and she was appointed to the Board of Directors in 2012. Serving as Chair during the pandemic, Penny led with remarkable steadiness and insight, guiding the agency through uncertainty while thoughtfully supporting staff and client families.

A true ambassador for Adopt-A-Family, Penny gives where it is needed – from school supplies to event sponsorships – always quietly, without seeking recognition. She contributes to every event and fundraising effort and is a driving force behind many new initiatives, most recently helping pioneer the Project Grow Graduation. She consistently champions the well-being of staff, understanding that a strong, supported team is essential to serving the community.

Adopt-A-Family was honored to present Penny with the 2025 Wiley Reynolds Society Award of Appreciation. Not many individuals have shaped the agency as profoundly as Penny, and her passion and vision continue to make a lasting difference in our community.

# Financials

YEAR ENDED JUNE 30, 2025\*

## STATEMENT OF FINANCIAL POSITION

### ASSETS

#### Current assets

Cash and cash equivalents	\$ 4,282,994
Grants and allocations receivable	907,483
Contributions receivable, net	44,150
Investments	2,240,627
Prepaid expenses	125,358

**Total current assets 7,600,612**

Cash and cash equivalents, non-current	1,746,510
Property and equipment, net	6,547,250
Community land trust, net	1,085,726
Finance right-of-use lease, net	60,009

**Total assets \$ 17,040,107**

### LIABILITIES AND NET ASSETS

#### Current liabilities

Accounts payable	\$ 11,825
Accrued expenses	392,124
Current portion of obligation under finance lease	21,672

**Total current liabilities 425,621**

#### Non-current liabilities

Resident deposits and escrow accounts	404,610
Obligation under finance lease	44,788

**Total liabilities 875,019**

#### Net assets

##### Without donor restrictions

Equity in fixed assets	6,547,250
Equity in community land trust	1,085,726
Designated for contingencies	1,341,900
Undesignated	6,170,080

**Total without donor restrictions 15,144,956**

**With donor restrictions 1,020,132**

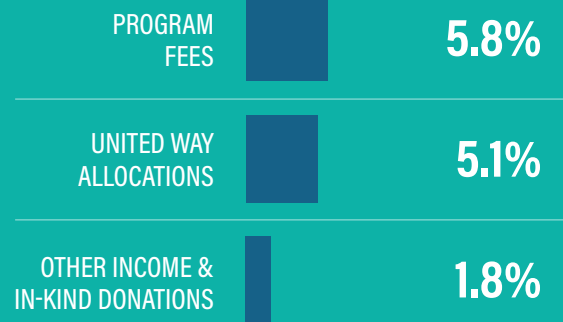
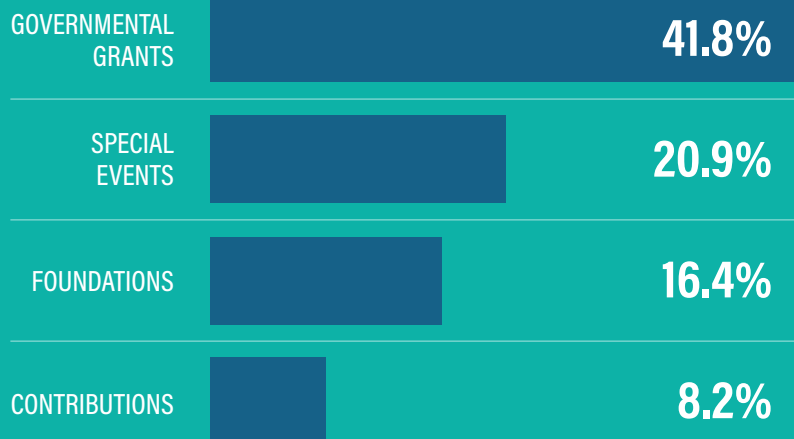
**Total net assets 16,165,088**

**Total liabilities and net assets \$ 17,040,107**

\* Extracted from audited financial statements.

Auditor: Holyfield & Thomas, LLC

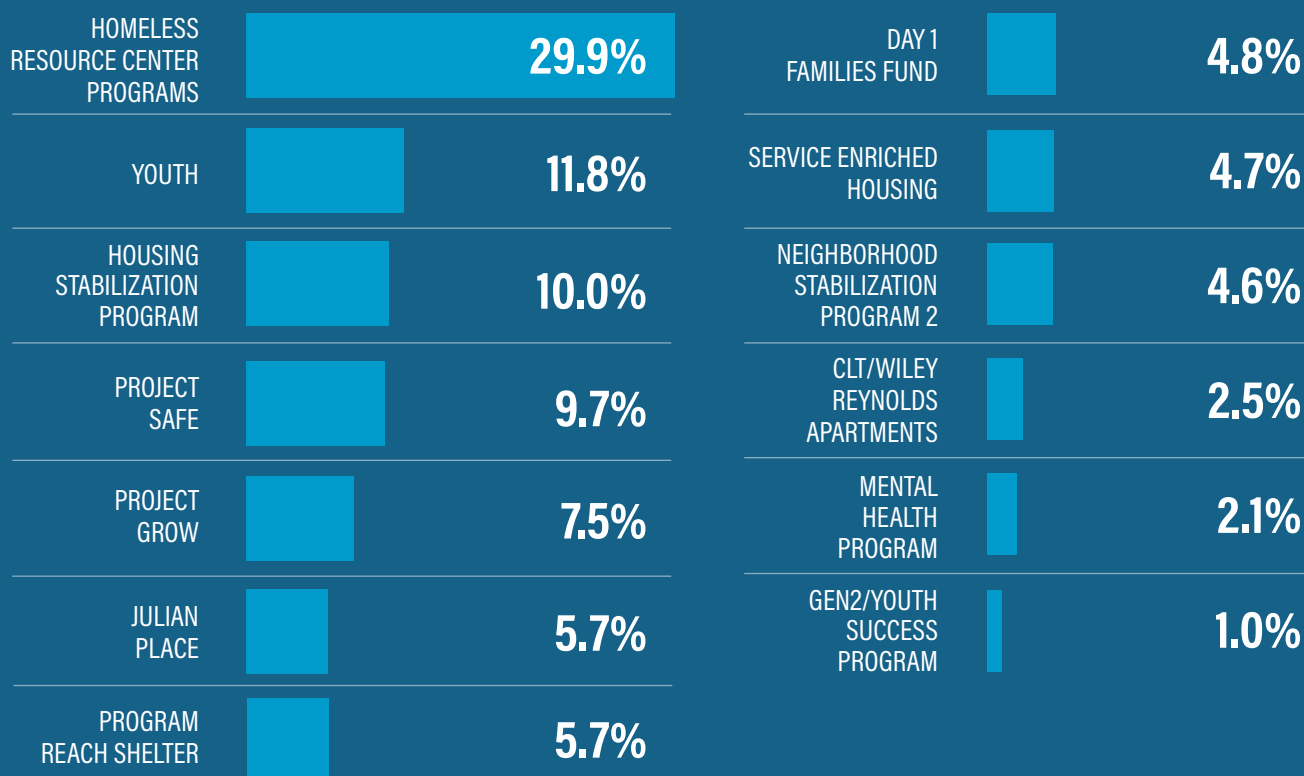
## REVENUE SOURCES



# STATEMENT OF ACTIVITIES

	Without Donor Restrictions	With Donor Restrictions	Totals
<b>SUPPORT AND REVENUE</b>			
<b>Grants and donations</b>			
Governmental grants	\$ 4,833,173	\$ -	\$ 4,833,173
United Way allocations	373,182	220,000	593,182
Contributions	1,828,969	850,800	2,679,769
In-kind donations	65,728	-	65,728
<b>Total grants and donations</b>	<b>7,101,052</b>	<b>1,070,800</b>	<b>8,171,852</b>
Special events	2,417,224	-	2,417,224
Rents	647,419	-	647,419
Project Grow tuition	17,528	-	17,528
Other income	130,575	7,986	138,561
Investment earnings, net	137,668	-	137,668
Gain (loss) on sale of investments	20,926	-	20,926
<b>Total support and revenue</b>	<b>10,472,392</b>	<b>1,078,786</b>	<b>11,551,178</b>
<b>Net assets released from restriction</b>	<b>1,108,619</b>	<b>(1,108,619)</b>	<b>-</b>
<b>EXPENSES</b>			
Program services	9,149,651	-	9,149,651
General and administrative	660,636	-	660,636
Fundraising and development	1,166,527	-	1,166,527
<b>Total expenses</b>	<b>10,976,814</b>	<b>-</b>	<b>10,976,814</b>
Change in net assets	604,197	(29,833)	574,364
<b>Net assets, beginning of year</b>	<b>14,540,759</b>	<b>1,049,965</b>	<b>15,590,724</b>
<b>Net assets, end of year</b>	<b>\$ 15,144,956</b>	<b>\$ 1,020,132</b>	<b>\$ 16,165,088</b>

## EXPENDITURES BY PROGRAM



# MISSION STATEMENT

Adopt-A-Family of the Palm Beaches, Inc. is dedicated to strengthening families with children in their efforts to achieve stability and self-sufficiency by providing access to all-encompassing services.

# VISION STATEMENT

Families are stably housed and thriving.

1712 Second Avenue North | Lake Worth, FL 33460 | (561) 253-1361 | [www.aafpbc.org](http://www.aafpbc.org)

 [facebook.com/AAFPBC](https://facebook.com/AAFPBC)

 [@aafpbc](https://instagram.com/aafpbc)

 [linkedin.com/company/aafpbc](https://linkedin.com/company/aafpbc)

