

# JULIAN PLACE 2020 PROJECT PROGRESS REPORT

## EXECUTIVE SUMMARY

Prepared for Adopt-A-Family of the Palm Beaches by



Bill Leon, Ph.D.  
Michael A. Power, Ph.D.



### JULIAN PLACE GOALS

**Families are stable in housing and basic needs**

*So That*

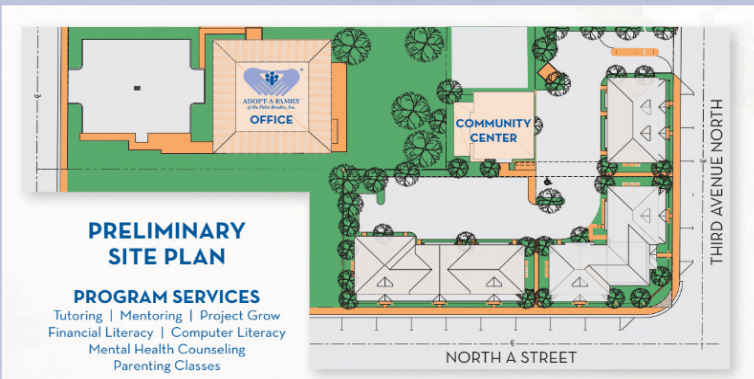
**Families are self-sufficient in meeting their needs**

*So That*

**Children succeed in school and are prepared for life**

*And*

**Julian Place becomes a model for additional properties and neighborhoods**



The complete 2020 Project Progress Report is available at

<https://adoptfamilypbpc.org/wp-content/uploads/AAF-Julian-Place-2020-Annual-Report-Final-2021.pdf>



## Background

Adopt-A-Family of the Palm Beaches, Inc. (AAF) is a non-profit organization dedicated to providing housing and holistic support services to local homeless and low-income families with children.

Substantial research indicates that there are interrelationships between housing stability and attaining positive outcomes for parents and their children. Families who are homeless or have unstable housing often do not have sufficient capacity and resources to sustain work and achieve high levels of personal development. In addition, their children do not have an opportunity to do well in school and succeed in life.

To address these issues, AAF created the Julian Place Project (the Project) in the Tropical Ridge neighborhood of Lake Worth, Florida. Tropical Ridge has a high level of homeless families, crime and unaffordable housing. The Julian Place Project is one of AAF’s more innovative undertakings that focuses on families with children attending the neighborhood elementary school—Highland Elementary School (HES). HES has partnered with

AAF to find and recruit families to be housed at Julian Place.

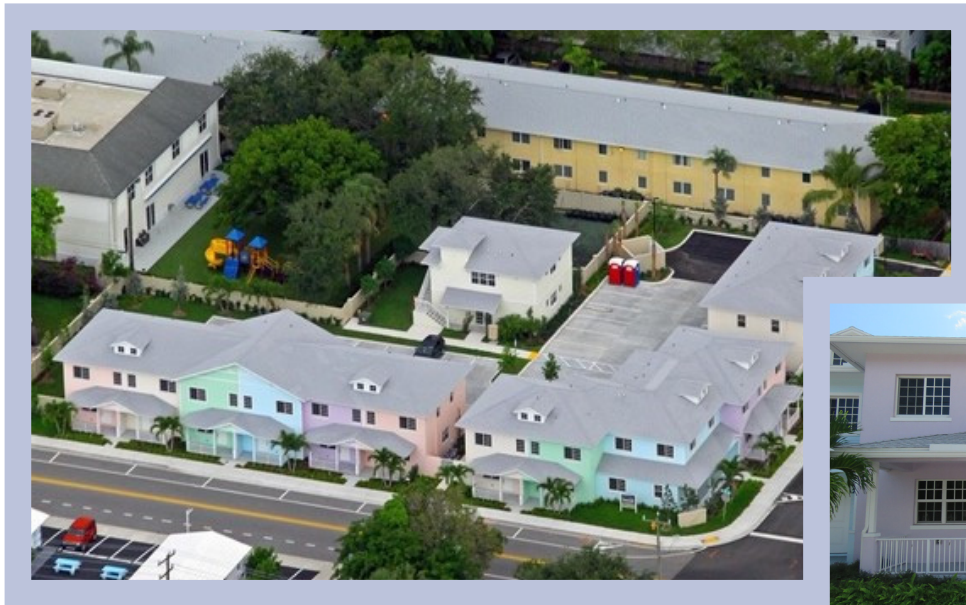
Highland Elementary School Demographics	
Category	% of Population
Hispanic	73.6
Black/African American	14.4
Alaska Native/American Indian	7.5
White	3.6
Other/Mixed	0.9
Economically Disadvantaged	94.8
English Language Learners*	65.7
Students with Disabilities	11.4
Homeless**	11.1

HES consistently ranks in the top five schools with the highest percentage of homeless students in the School District of Palm Beach County. Students in grades three through five attending HES score well below the District and State test average in English language arts and slightly below the average in mathematics.

Highland Elementary School Student, District and State English Language Arts and Mathematics Test Scores			
Subject	Group	All Students % at State Standard	Homeless Students % at State Standard
English Language Arts	HES	34%	27%
	District	59%	33%
	State	57%	38%
Mathematics	HES	57%	38%
	District	63%	41%
	State	60%	41%

\* English Language Learners are students who are learning English as a second language.

\*\* Second most in the District



## The Julian Place Project

Prior to starting the Project, AAF compiled local housing data, solicited information from focus groups and searched nationwide for programmatic models that used affordable housing to achieve positive educational outcomes for students.

Using these models, the information collected and relying on past successes, AAF refined its vision, recruited community partners and funders and raised \$5.4 million to design and build Julian Place with 14 furnished townhomes, a community

building and wraparound services for resident parents and their children.

Julian Place has a “Place Based” design that allows families to remain at their home school and stay rooted in their existing social supports in the neighborhood in which they live. Because Julian Place families can stay in their homes as long as they wish, it allows them to envision a future of stability, not just a short-term reprieve from the constant search for housing.

## Timeline

2014	<ul style="list-style-type: none"> <li>• Adopt-A-Family inquired about a vacant lot adjacent to its campus</li> <li>• Seller owned four lots and would only sell entire parcel</li> <li>• Adopt-A-Family presented opportunity to longtime agency donor who provided funds to purchase land</li> </ul>
2015	<ul style="list-style-type: none"> <li>• Structures on the land not suitable for habitation were demolished</li> <li>• Adopt-A-Family embarked on a community needs assessment to determine the best use for the land</li> </ul>
2017	<ul style="list-style-type: none"> <li>• Preliminary plans created</li> <li>• Capital campaign launched to raise funds</li> </ul>
2018	<ul style="list-style-type: none"> <li>• Groundbreaking Ceremony in November</li> </ul>
2020	<ul style="list-style-type: none"> <li>• Construction complete in April</li> <li>• First family moved into Julian Place in June</li> </ul>

# Objectives

The Project is intentional in design, management and evaluation. To keep focused and on track, eight key objectives have been identified that are more thoroughly discussed in the full first year report.

1. Secure funding to build affordable housing for families with students in Highland Elementary School
2. Build collaboration with partners in the School, School District and community service agencies
3. Recruit and house families
4. Provide opportunities and support family personal change and development
5. Improve student outcomes
6. Improve parent and family outcomes
7. Improve community outcomes
8. Design and implement an ongoing program evaluation process to track changes in youth and families

# Outcomes



Outcomes are the results expected from the housing, services and community building efforts and are grouped into these categories.

## Parents & Families

### IMPROVED

- Parenting skills to support children’s educational and emotional needs
- Engagement with school
- Ability to prepare children for school
- Ability to cope with obstacles to progress
- Access to stable, suitable, safe housing with facilities to support healthy family life
- Access to services
- Access to and use of health care
- Use of educational and job training opportunities and career support services
- Opportunities for employment
- Stress management
- Financial literacy knowledge and use of financial support advisors
- Income from earned and unearned sources
- Sense of life improvements and movement toward self-sufficiency and resiliency

## Students

### IMPROVED

- School attendance
- Access to services, health care and education
- Engagement in extra-curricular activities
- Performance in school learning
- Test scores
- Advancement to next grade
- Likelihood to graduate from high school and attend post-secondary education
- Social skills

## Community

### IMPROVED

- Sense of community among families
- Sense of community among residents
- Neighborhood stability

## Year-End 2020 Progress and Status

Adopt-A-Family has built not only quality housing to accommodate 14 families, it has designed and built an entire program to support families with education, social services and a robust system for ongoing program improvements. The rollout of the Julian Place Project has been completed with a high degree of coordination with significant partners in the community and with a well thought out and planned response to local needs and the challenges of individual families and children.

AAF has made significant progress despite delays resulting from the coronavirus pandemic which has made it especially difficult to find, inform and recruit families. AAF has:

- Partnered with several key agencies;
- Housed their first families who are already taking advantage of support services referrals;
- Begun equipping the Jayne and Tim Donahue Community Center so families can hold gatherings, work and study online and attend programs and classes;

- Hired staff and
- Hired Geo Education & Research to design and implement a comprehensive evaluation plan covering data collection, analysis and reporting on Project outcomes.

The Program is already having positive impacts on families, and AAF expects all units to be occupied by the end of the 2020 - 2021 school year.

Continued marketing and recruiting efforts for Julian Place families is underway. Relationships and staffing are available to provide the insights into individual child and family needs and to refer families to support services.

An evaluation strategy and data collection and analysis tools are in place to capture data for evaluation and ongoing status updates and management as the Project progresses.

# OUTCOME MAP NARRATIVE

Adopt-A-Family has undertaken the Julian Place Project to help homeless families achieve stable housing and other basic needs so that they can become self-sufficient in meeting their needs and students in these families can succeed and be prepared for life.

The Adopt-A-Family’s Julian Place Outcome Map Narrative (Outcome Map available in full report) depicts the sequential relationships between strategies and intended outcomes and goals. Strategies, outcomes and goals are often used differently by different groups and or fields. Geo defines Strategies, Outcomes and Goals as follows:

**Strategies** are a related set of **Activities** needed to implement a program using available **Resources**. **Outcomes** are short, intermediate or long-term changes that can occur among individuals, families, communities, organizations or systems. **Goals** are sizeable, lasting and positive long-term changes.

## For the Julian Place Project,

<p><b>...these RESOURCES are used...</b></p>	<ul style="list-style-type: none"> <li>• Donor funding</li> <li>• Affordable housing</li> <li>• Onsite community center</li> <li>• Onsite computer lab</li> <li>• Experience and infrastructure to manage housing and low-income programs</li> </ul>	<ul style="list-style-type: none"> <li>• Program Manager</li> <li>• Academic advisors</li> <li>• Parenting educators</li> <li>• Financial literacy educators</li> <li>• Data support and advise</li> <li>• Onsite and school office space for case managers</li> </ul>
--	--	--

<p><b>...to perform these ACTIVITIES for each STRATEGY...</b></p>	<p><b>Strategy Activities</b></p>	<p><b>Mobilize, Inform and Coordinate Staff, Services and Partners</b></p> <ul style="list-style-type: none"> <li>• Develop/expand strategic partnerships</li> <li>• Develop and support effective staff and volunteers</li> <li>• Identify and engage families to participate in all aspects of program</li> <li>• Build referral networks of social, educational and economic services</li> <li>• Assist partners with self-assessment, program improvement and cultural competency</li> <li>• Identify and address ongoing areas of need, gaps in service &amp; opportunities for collaboration and intervention</li> <li>• Educate leaders and public on support needs</li> <li>• Incorporate school and District data for ongoing planning and support</li> <li>• Share information, data and lessons learned on program effectiveness</li> <li>• Encourage continuous learning and program refinement</li> <li>• Implement best practices of family care and support</li> </ul>
---	-----------------------------------	---

# OUTCOME MAP NARRATIVE

	<b>Strategy Activities</b>	<b>Provide Opportunities</b> <ul style="list-style-type: none"> <li>• Select, orient and house families</li> <li>• Provide housing for 14 families</li> <li>• Provide and support pro-social activities</li> <li>• Continue after school programs for elementary school students</li> <li>• Implement best practices of family care and support</li> <li>• Develop assessment and referral process to link parents and youth to services and activities</li> <li>• Link participants to support activities providing education, jobs training and employment</li> <li>• Empower parents and families to identify and address collective problems and opportunities</li> </ul>
	<b>Strategy Activities</b>	<b>Support Personal Change and Development</b> <ul style="list-style-type: none"> <li>• Provide parenting training</li> <li>• Provide financial literacy classes</li> <li>• Provide tutoring and mentoring to students</li> <li>• Provide academic advising with parents for their children</li> <li>• Provide any needed mental health counseling for family members</li> <li>• Provide case management services on site and at school with interactions among teachers, parents, and students</li> </ul>
	<b>Strategy Activities</b>	<b>Measure and Track Progress</b> <ul style="list-style-type: none"> <li>• Use evaluation system with process and outcome measures</li> <li>• Assess and track youth and parents' growth over time</li> </ul>
	<b>Strategy Activities</b>	<b>Promote Community Engagement</b> <ul style="list-style-type: none"> <li>• Implement activities that increase neighborhood cohesiveness</li> <li>• Recognize and celebrate individual and collective successes</li> </ul>

<b>...to achieve these anticipated intermediate- and long-term OUTCOMES...</b>	<b>PARTNERSHIP AND SERVICE OUTCOMES</b>	
	<b>Intermediate-Term Outcomes</b>	<b>IMPROVED</b> <ul style="list-style-type: none"> <li>• Coordination between Adopt-A-Family, Highland Elementary School, and The School District of Palm Beach County and other social services</li> <li>• Use of local social service agencies by families</li> <li>• Ability to measure and track progress</li> </ul>
	<b>Long-Term Outcome</b>	<b>IMPROVED</b> <ul style="list-style-type: none"> <li>• Overall multi-service and integral approach of support to families</li> </ul>

# OUTCOME MAP NARRATIVE

<b>PARENT AND FAMILY OUTCOMES</b>	
<b>Intermediate-Term Outcomes</b>	<b>IMPROVED</b> <ul style="list-style-type: none"> <li>• parenting skills to support children’s educational and emotional needs</li> <li>• engagement with school</li> <li>• ability of parents to prepare children for school (e.g., fed, be on-time, homework completed)</li> <li>• ability to cope with obstacles to progress</li> <li>• access to stable, suitable, safe housing with facilities to support healthy family life</li> <li>• access to services</li> <li>• access to and use of health care</li> <li>• use of educational and job training opportunities and career support services</li> <li>• stress management</li> </ul>
<b>Long-Term Outcomes</b>	<b>IMPROVED</b> <ul style="list-style-type: none"> <li>• opportunity for employment</li> <li>• financial literacy knowledge and use of financial support advisors</li> <li>• income from earned and unearned sources</li> <li>• sense of life improvement and movement toward self-sufficiency and resiliency</li> </ul>
<b>STUDENT OUTCOMES</b>	
<b>Intermediate-Term Outcomes</b>	<b>IMPROVED</b> <ul style="list-style-type: none"> <li>• school attendance</li> <li>• access to services, health care and education</li> <li>• engagement in extra-curricular activities</li> </ul>
<b>Long-Term Outcomes</b>	<b>IMPROVED</b> <ul style="list-style-type: none"> <li>• performance in school learning</li> <li>• test scores</li> <li>• advancement to next grade</li> <li>• likelihood to graduate from high school and attend post-secondary education</li> <li>• social skills</li> </ul>
<b>COMMUNITY OUTCOMES</b>	
<b>Intermediate-Term Outcomes</b>	<b>IMPROVED</b> <ul style="list-style-type: none"> <li>• sense of community among families</li> <li>• sense of community among residents</li> </ul>
<b>Long-Term Outcome</b>	<b>IMPROVED</b> <ul style="list-style-type: none"> <li>• neighborhood stability</li> </ul>

<b>...and ultimately these Project GOALS.</b>	<ul style="list-style-type: none"> <li>• Families are stable in housing and other basic needs</li> <li>• Families are self-sufficient in meeting their needs</li> <li>• Students succeed in school and are prepared for life</li> <li>• Julian Place Project becomes a model for additional properties and neighborhoods</li> </ul>
---	---