

JULIAN PLACE 2021 PROJECT PROGRESS REPORT EXECUTIVE SUMMARY

Prepared for Adopt-A-Family of the Palm Beaches by



Bill Leon, Ph.D.
Michael A. Power, Ph.D.



JULIAN PLACE GOALS

Families are stable in housing and basic needs

So That

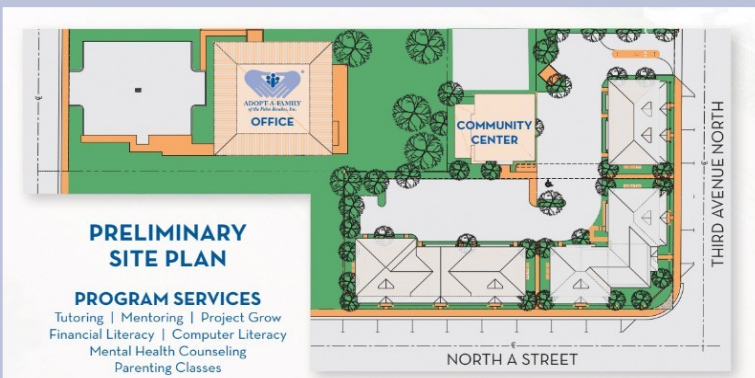
Families are self-sufficient in meeting their needs

So That

Children succeed in school and are prepared for life

And

Julian Place becomes a model for additional properties and neighborhoods



The complete 2021 Project Progress Report is available at

<https://adoptfamilybpc.org/wp-content/uploads/PDF-of-Julian-Place-2021-Annual-Report.pdf>



Background

Adopt-A-Family of the Palm Beaches, Inc. (AAF) is a non-profit organization dedicated to providing housing and holistic support services to local homeless and low-income families with school aged children.

Substantial research indicates that there are interrelationships between housing stability and attaining positive outcomes for parents and their children. Families who are homeless or have unstable housing often do not have sufficient capacity and resources to sustain work and achieve high levels of personal development. In addition, their children do not have an opportunity to do well in school and succeed in life.

To address these issues, AAF created the Julian Place Project (the Project) in the Tropical Ridge neighborhood of Lake Worth, Florida. Tropical Ridge has a high level of homeless families, crime and unaffordable housing. The Julian Place Project is one of AAF’s more innovative undertakings that focuses on families with children attending the neighborhood elementary school—Highland Elementary School (HES). HES has partnered with

AAF to find and recruit families to be housed at Julian Place.

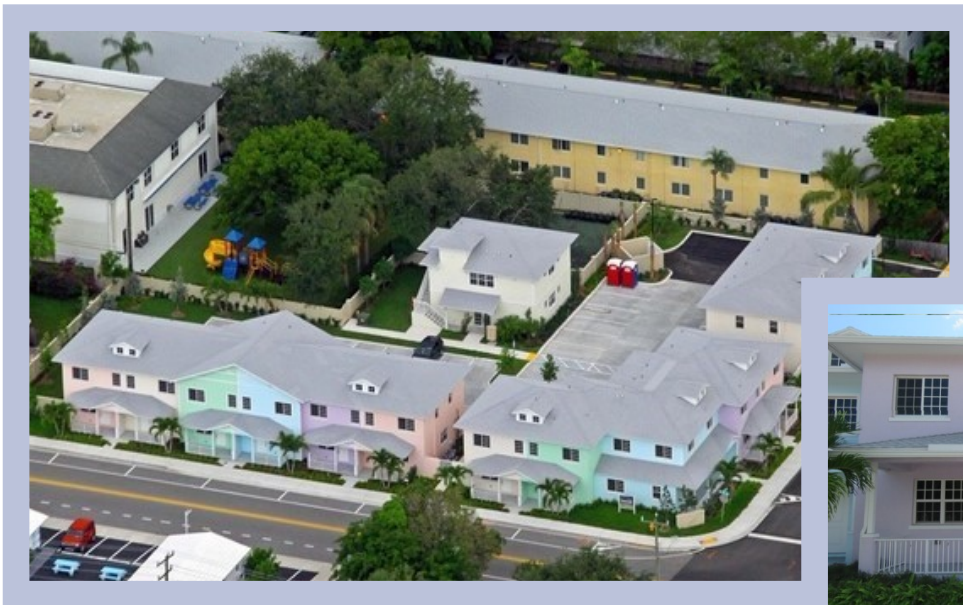
Highland Elementary School Demographics	
Category	% of Population
Hispanic	71
Black/African American	18
Alaska Native/American Indian	6
White	4
Other/Mixed	1
Economically Disadvantaged	97
English Language Learners*	64
Students with Disabilities	12
Homeless**	9
Immigrant	5

HES consistently has a high percentage of homeless students. Students in grades three through five score well below the District and State test averages in English language arts and slightly below the averages in mathematics.

Highland Elementary School Student, District and State English Language Arts and Mathematics Test Scores			
Subject	Group	All Students % at State Standard	Homeless Students % at State Standard
English Language Arts	HES	28%	21%
	District	54%	31%
	State	53%	31%
Mathematics	HES	29%	36%
	District	47%	27%
	State	48%	29%

* English Language Learners are students who are learning English as a second language.

** Second most in the District.



The Julian Place Project

Prior to starting the Project, AAF compiled local housing data, solicited information from focus groups and searched nationwide for programmatic models that used affordable housing to achieve positive educational outcomes for students.

Using these models, the information collected and relying on past successes, AAF refined its vision, recruited community partners and funders and raised \$6.2 million to design and build and manage Julian Place with 14 furnished townhomes, a

community building, and wraparound services for resident parents and their children.

Julian Place has a “Place Based” design that allows families to remain at their home school and stay rooted in their existing social supports in the neighborhood in which they live. Because Julian Place families can stay in their homes as long as they wish, it allows them to envision a future of stability, not just a short-term reprieve from the constant search for housing.

Timeline

2014	<ul style="list-style-type: none"> • Adopt-A-Family inquired about a vacant lot adjacent to its campus • Seller owned four lots and would only sell entire parcel • Adopt-A-Family presented opportunity to longtime agency donor who provided funds to purchase land
2015	<ul style="list-style-type: none"> • Structures on the land not suitable for habitation were demolished • Adopt-A-Family embarked on a community needs assessment to determine the best use for the land
2017	<ul style="list-style-type: none"> • Preliminary plans created • Capital campaign launched to raise funds
2018	<ul style="list-style-type: none"> • Groundbreaking Ceremony in November
2020	<ul style="list-style-type: none"> • Construction completed in April • First family moved into Julian Place in June
2021	<ul style="list-style-type: none"> • All units occupied (with one reserved for a resident manager) • Equipped and started using Donahue Center

Objectives

The Project is intentional in design, management, and evaluation. To keep focused and on track, eight key objectives have been identified that are more thoroughly discussed in the full first year report.

1. Secure funding to build affordable housing for families with students in Highland Elementary School
2. Build collaboration with partners in the School, School District, and community service agencies
3. Recruit and house families
4. Provide opportunities and support family personal change and development
5. Improve student outcomes
6. Improve parent and family outcomes
7. Improve community outcomes
8. Design and implement an ongoing program evaluation process to track changes in youth and families

Outcomes



Outcomes are the results expected from the housing, services, and community building efforts and are grouped into these categories.

Parents & Families

IMPROVED

- Parenting skills to support children’s educational and emotional needs
- Engagement with school
- Ability to prepare children for school
- Ability to cope with obstacles to progress
- Access to stable, suitable, safe housing with facilities to support healthy family life
- Access to services
- Access to and use of health care
- Use of educational and job training opportunities and career support services
- Opportunities for employment
- Stress management
- Financial literacy knowledge and use of financial support advisors
- Income from earned and unearned sources
- Sense of life improvements and movement toward self-sufficiency and resiliency

Students

IMPROVED

- School attendance
- Access to services, health care, and education
- Engagement in extra-curricular activities
- Performance in school learning
- Test scores
- Advancement to next grade
- Likelihood to graduate from high school and attend post-secondary education
- Social skills

Community

IMPROVED

- Sense of community among families
- Sense of community among residents
- Neighborhood stability

Year-End 2021 Progress and Status

Adopt-A-Family has built not only quality housing to accommodate 14 families, it has designed and built an entire program to support families with education, social services, and a robust system for ongoing program improvements. The rollout of the Julian Place Project has been completed with a high degree of coordination with significant partners in the community and with a well thought out and planned response to local needs and the challenges of individual families and children.

AAF has made significant progress despite delays resulting from the coronavirus pandemic, which has made it especially difficult to find, inform, and recruit families. AAF has:

- Partnered with several key agencies;
- Housed families who are taking advantage of support services referrals;
- Begun using the Jayne and Tim Donahue Community Center so families can hold gatherings, work and study online, and attend programs and classes; and
- Worked with Geo Education & Research to implement a comprehensive evaluation plan covering data collection, analysis, and reporting on Project outcomes.

The Program is already having positive impacts on families, and AAF all units are now occupied.

Continued marketing and recruiting efforts for Julian Place families is underway. Relationships and staffing are available to provide the insights into individual child and family needs and to refer families to support services.

An evaluation strategy and data collection and analysis tools are in place to capture data for evaluation, ongoing status updates, and management as the Project progresses.

A survey of the Julian Place parents showed very high satisfaction with all of the program elements as shown by scores of above four out of five on all of the survey questions. Comments by the parents showed deep satisfaction and appreciation for the services and program staff. Additionally, although data from the school district were not available as the time of this report, AAF staff report improved student attendance and the parents indicated on the survey that they already see changes in their children's behavior and success in school.

OUTCOME MAP NARRATIVE

Adopt-A-Family has undertaken the Julian Place Project to help homeless families achieve stable housing and other basic needs so that they can become self-sufficient in meeting their needs and students in these families can succeed and be prepared for life.

The Adopt-A-Family’s Julian Place Outcome Map Narrative (Outcome Map available in full report) depicts the sequential relationships between strategies and intended outcomes and goals. Strategies, outcomes, and goals are often used differently by different groups and or fields. Geo defines Strategies, Outcomes and Goals as follows:

Strategies are a related set of **Activities** needed to implement a program using available **Resources**. **Outcomes** are short, intermediate, or long-term changes that can occur among individuals, families, communities, organizations or systems. **Goals** are sizeable, lasting, and positive long-term changes.

For the Julian Place Project,

<p>...these RESOURCES are used...</p>	<ul style="list-style-type: none"> • Donor funding • Affordable housing • Onsite community center • Onsite computer lab • Experience and infrastructure to manage housing and low-income programs 	<ul style="list-style-type: none"> • Program Manager • Academic advisors • Parenting educators • Financial literacy educators • Data support and advise • Onsite and school office space for case managers
--	--	--

<p>...to perform these ACTIVITIES for each STRATEGY...</p>	<p>Strategy Activities</p>	<p>Mobilize, Inform and Coordinate Staff, Services and Partners</p> <ul style="list-style-type: none"> • Develop/expand strategic partnerships • Develop and support effective staff and volunteers • Identify and engage families to participate in all aspects of program • Build referral networks of social, educational, and economicservices • Assist partners with self-assessment, program improvement and cultural competency • Identify and address ongoing areas of need, gaps in service & opportunities for collaboration and intervention • Educate leaders and public on support needs • Incorporate school and District data for ongoing planning and support • Share information, data and lessons learned on program effectiveness • Encourage continuous learning and program refinement • Implement best practices of family care and support
---	-----------------------------------	---

OUTCOME MAP NARRATIVE

	Strategy Activities	Provide Opportunities <ul style="list-style-type: none"> • Select, orient, and house families • Provide housing for 14 families • Provide and support pro-social activities • Continue after school programs for elementary school students • Implement best practices of family care and support • Develop assessment and referral process to link parents and youth to services and activities • Link participants to support activities providing education, jobs training, and employment • Empower parents and families to identify and address collective problems and opportunities
	Strategy Activities	Support Personal Change and Development <ul style="list-style-type: none"> • Provide parenting training • Provide financial literacy classes • Provide tutoring and mentoring to students • Provide academic advising with parents for their children • Provide any needed mental health counseling for family members • Provide case management services on site and at school with interactions among teachers, parents, and students
	Strategy Activities	Measure and Track Progress <ul style="list-style-type: none"> • Use evaluation system with process and outcome measures • Assess and track youth and parents' growth over time
	Strategy Activities	Promote Community Engagement <ul style="list-style-type: none"> • Implement activities that increase neighborhood cohesiveness • Recognize and celebrate individual and collective successes

...to achieve these anticipated intermediate- and long-term OUTCOMES...	PARTNERSHIP AND SERVICE OUTCOMES	
	Intermediate-Term Outcomes	IMPROVED <ul style="list-style-type: none"> • Coordination between Adopt-A-Family, Highland Elementary School, and The School District of Palm Beach County and other social services • Use of local social service agencies by families • Ability to measure and track progress
	Long-Term Outcome	IMPROVED <ul style="list-style-type: none"> • Overall multi-service and integral approach of support to families

OUTCOME MAP NARRATIVE

PARENT AND FAMILY OUTCOMES	
Intermediate-Term Outcomes	IMPROVED <ul style="list-style-type: none"> • parenting skills to support children’s educational and emotional needs • engagement with school • ability of parents to prepare children for school (e.g., fed, be on-time, homework completed) • ability to cope with obstacles to progress • access to stable, suitable, safe housing with facilities to support healthy family life • access to services • access to and use of health care • use of educational and job training opportunities and career support services • stress management
Long-Term Outcomes	IMPROVED <ul style="list-style-type: none"> • opportunity for employment • financial literacy knowledge and use of financial support advisors • income from earned and unearned sources • sense of life improvement and movement toward self-sufficiency and resiliency
STUDENT OUTCOMES	
Intermediate-Term Outcomes	IMPROVED <ul style="list-style-type: none"> • school attendance • access to services, health care, and education • engagement in extra-curricular activities
Long-Term Outcomes	IMPROVED <ul style="list-style-type: none"> • performance in school learning • test scores • advancement to next grade • likelihood to graduate from high school and attend post-secondary education • social skills
COMMUNITY OUTCOMES	
Intermediate-Term Outcomes	IMPROVED <ul style="list-style-type: none"> • sense of community among families • sense of community among residents
Long-Term Outcome	IMPROVED <ul style="list-style-type: none"> • neighborhood stability

...and ultimately these Project GOALS.	<ul style="list-style-type: none"> • Families are stable in housing and other basic needs • Families are self-sufficient in meeting their needs • Students succeed in school and are prepared for life • Julian Place Project becomes a model for additional properties and neighborhoods
---	---